

Chargemaster[®] Static Charging Systems



Chargemaster systems utilize high frequency switching technology, which offers three major advantages. First, it ensures that the voltage output from the power supply is equal to the voltage requested via the controls. Second, fluctuations on the AC input line will not affect the voltage output. Finally, variances in load, up to the recommended maximum, do not affect the voltage output.

Additional circuitry controls the duty cycle of an arcing condition, ensuring that little energy is created during arcing to prevent injury and equipment damage.

Chargemaster Power Supply Models



VCM - programmable for either voltage or current control mode. This static charging system is available with negative or positive output voltages, and also available with both positive and negative (dual mount).

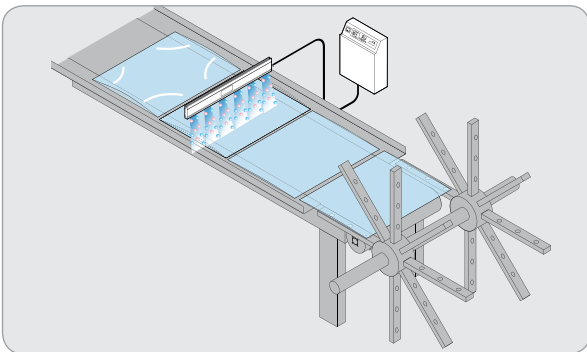
CM 20 - provides either two positive or two negative outputs. This small footprint static charging system can supply up to 20 kV of power

Specifications

Dimensions	30 kV 10.5"W x 4.25"H x 13.5"D; 60 kV 10.5"W x 4.25"H x 15"D
Input Voltage	85-260 VAC @ 47-63 Hz
Output Voltage	0-30 kV @ 5 mA & 0-60 kV @ 2.5 mA
Output Ports	4
Weight	16.5 lbs
Voltage Rise Time	Under 70 msec
Remote Output Adjust	Analog signals, 0-24/4-20 mADC or 0-5/0-10 VCD

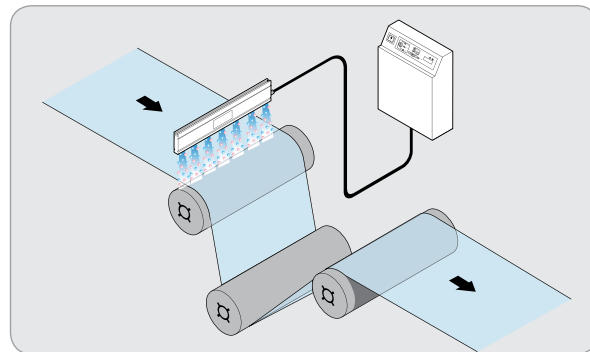
Specifications

Dimensions	6"W x 4.25"H x 11.25"D
Input Voltage	90-130 VAC @ 50-60Hz or 180-260 VAC @ 50/60Hz
Output Voltage	0-20 kV @ 0-0.7 mA
Output Ports	4
Weight	11.5 lbs
Voltage Rise Time	Under 60 msec
Remote Output Adjust	Analog signals, 0-10 VAC, D/sub connector



Plastic Bagmaking

When manufacturing bags, use an electrostatic charging system to prevent the bags from lifting and to help the bags continue along the conveyor line.



Chill Tack Systems

In heatset offset printing, an electrostatic charging system pins the web to the chill roll to prevent slipping and eliminate streaking.





Chargemaster Power Supply and Bars

Each Chargemaster system consists of a DC power supply and one or more of the following charging bars.

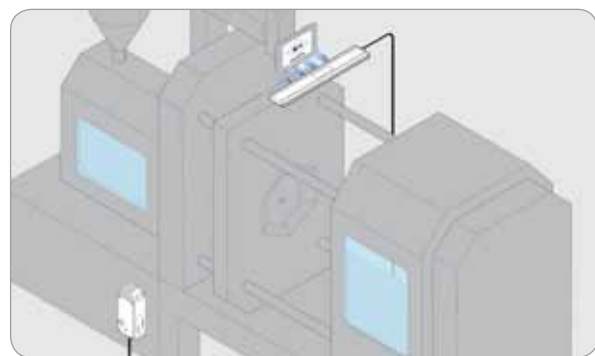


MCM 30

- Ultra-compact and lightweight
- Input powered 24 VDC
- Maximum output 30 kV @ 1 mA

Specifications

Dimensions	7.75" L x 3.00" W x 2.62" D (197 mm L x 76 mm W x 67 mm D)
Input Power	24 VDC, 3 A, 75W max
Output Voltage	3 to 30 kVDC
Output Current	0.1mA to 1mA (single output)
Weight	1.7 lbs (0.77 kg)



In Mold Labeling

An electrostatic charging system is used to hold a label flush against the inside of the mold during injection molding to improve finished product quality.



Pinner Arc Resistant Bar

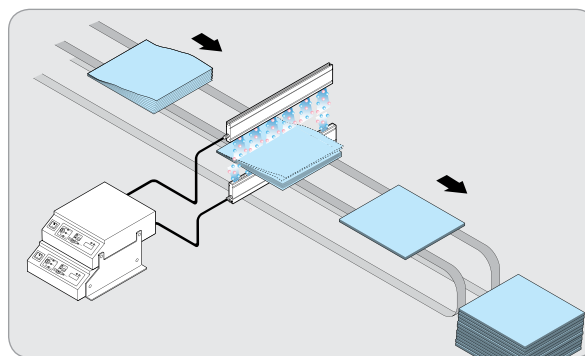
- Current limited for operator safety
- Replaceable pins for continuous performance
- Available with non-replaceable pins

Pinner Superbar

- Maximum voltage and current output
- Replaceable pins for continuous performance
- Removable high voltage cable for cleaning

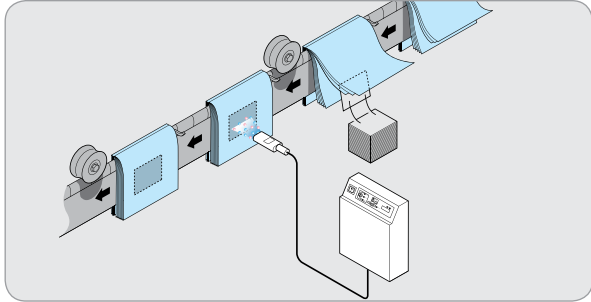
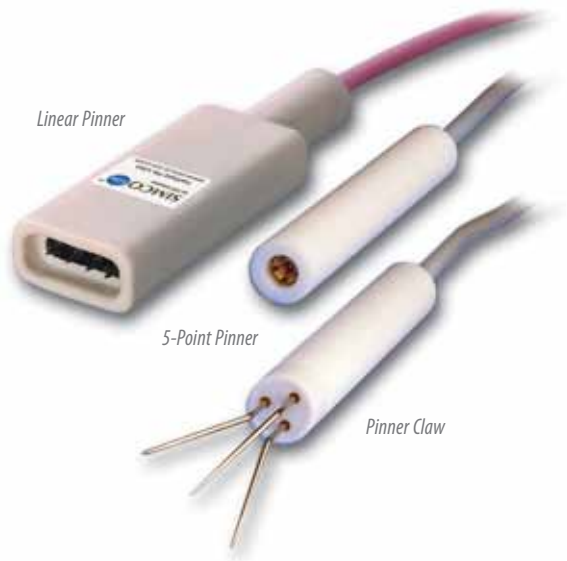
Specifications

Dimensions	Pinner Bar: 3.25"H x .75"W; Super Bar: 14.25"L x 6.5"W
Effective Length	Pinner Bar: 5-147" in 3" increments; Super Bar: 10.5"
Operating Voltage	Pinner Bar: Rated ± 30 kV, can be used to ± 0 kV with special provisions; Super Bar: 30 kV max
Ionizing Pins	Pinner: removeable/replaceable Pinner NR: Not removeable/replaceable; Super Bar: 316 SS, removeable/replaceable
Weight	Pinner: 2 lbs 2 oz per foot; Super Bar: 5 lbs 5 oz
Connector	Pinner: 50 kV spring loaded standard, with optional 30kV Super Bar: 30 kV



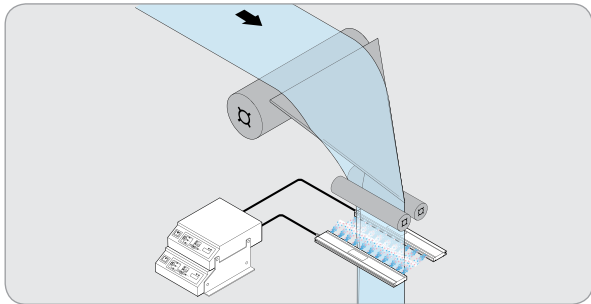
Catalogue Stacking

Using a static charging system to charge catalogs before stacking adheres the catalogs together while reducing edge damage, improving transportation and increasing production.



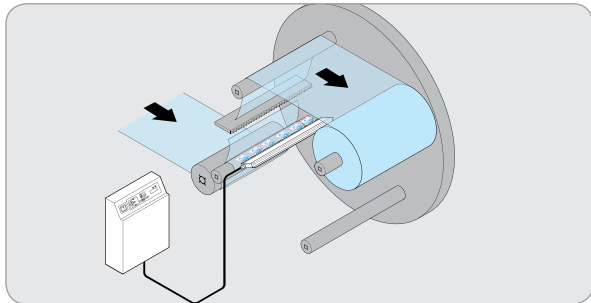
Card Inserts- Saddle Stitch

On a saddle stitcher, place a charging applicator over the signature just as the catalogs close to trap the card in place and prevent fall outs.



Ribbon Tacking

A charging system used for ribbon tacking bonds the ribbons together so that they move easily, preventing creases and 'dog ears' in the finished product.



Roll to Roll Transfer

Applying a temporary charge to a roll with a charging system adheres the leading edge to the core without tape or adhesives while eliminating creases.

Charging Applicators

- Current limited design for operator and equipment protection
- Arc condition sensing and intervention for uninterrupted pinning
- Minimized EMI and RFI generation

Specifications

Profile	Linear: 4.75" x .75" dia; 5-Point: 7" x .75" dia; Claw: 8.5" x .75" dia
Operating Distance	0.5" min
Operating Voltage	30 kV max
Ionizing Pins	Linear: 4 removeable; 5-Point: 5 fixed; Claw: 3 removeable
Weight	0.65 lbs



An ITW Company

Simco-Ion

2257 North Penn Road
 Hatfield, PA 19440-1998
 Tel: 800.203.3419 (in USA)
 Tel: 215.822.6401
 customerservice@simco-ion.com
 www.simco-ion.com